

ANIMAL STRUCTURE

GENERAL CONCEPTS

LEVELS OF COMPLEXITY

PROTOPLASMIC

CELLULAR

CELL-TISSUE

TISSUE - ORGAN

ORGAN SYSTEM

TISSUES

GENERAL CONCEPTS

EPITHELIAL
STRUCTURE & FUNCTION

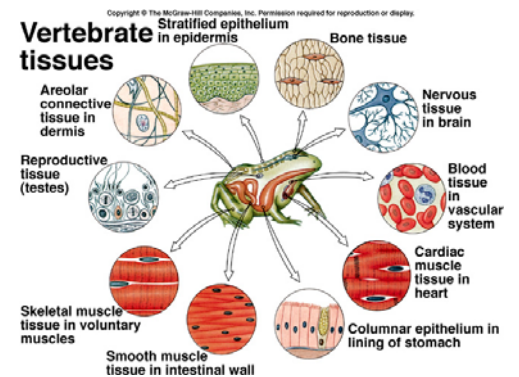
INTEGUMENT
INVERTEBRATE

VERTEBRATE

FUNCTIONS

CONNECTIVE
STRUCTURE & FUNCTION

TYPES



SKELETONS
FUNCTIONS

TYPES

MUSCULAR

NERVOUS

ANIMAL BODY PLANS

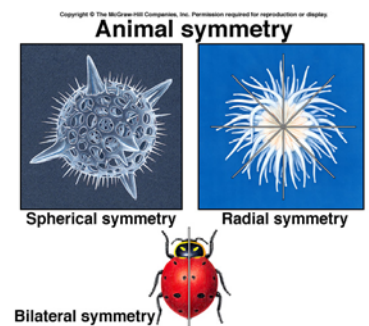
GENERAL CONCEPTS

ANIMAL SYMMETRY

RADIAL SYMMETRY

BILATERAL SYMMETRY

ASYMMETRY



CEPHALIZATION

DEVELOPMENT

GENERAL CONCEPTS

SPIRAL CLEAVAGE - PROTOSTOMES

RADIAL CLEAVAGE - DEUTEROSTOMES

BODY CAVITIES

ACOELOMATE

PSEUDOCOELOMATE

EUCOELOMATE

SEGMENTATION

INCREASING SIZE

