

PHYLUM ARTHROPODA (ARTHROPODS)

MEMBERS

SUBPHYLUM MYRIAPODA

CLASS CHILOPODA (**CENTIPEDES**)

CLASS DIPLOPODA (**MILLIPEDES**)

SUBPHYLUM HEXAPODA

GENERAL CHARACTERISTICS

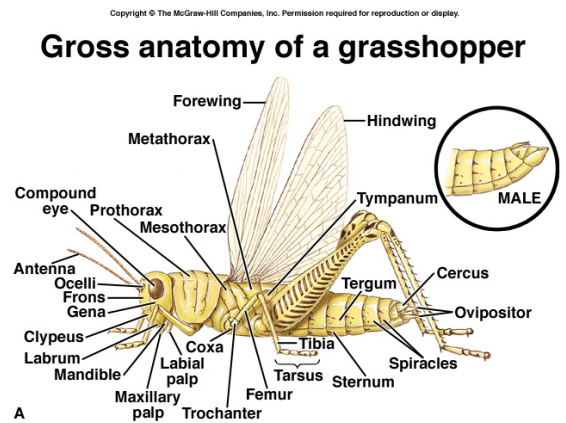
CLASS INSECTA (**INSECTS**)
GENERAL CHARACTERISSTICS

EXTERNAL STRUCTURE
HEAD

THORAX

ABDOMEN

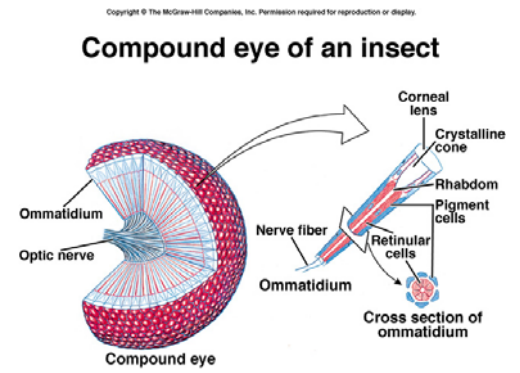
WINGS & FLIGHT



INTERNAL STRUCTURE
DIGESTIVE SYSTEM

GAS EXCHANGE

SENSE ORGANS



METAMORPHOSIS & GROWTH

BEHAVIORS
BEHAVIORS

COMMUNICATION

SOCIAL INSECTS
EXAMPLES

COLONIES

CASTES

IMPORTANCE TO HUMANS
BENEFICIAL INSECTS

HARMFUL INSECTS
