

# **PHYLUM HEMICHORDATA**

---

## **GENERAL CHARACTERISTICS**

### **CLASS ENTEROPNEUSTA (ACORN WORMS)**

### **CLASS PTEROBRANCHIA**

---

# **PHYLUM CHORDATA (CHORDATES)**

---

## **GENERAL CHARACTERISTICS**

---

### **FIVE CHORDATE HALLMARKS**

NOTOCHORD

DORSAL TUBULAR NERVE CORD

PHARYNGEAL POUCHES / SLITS

ENDOSTYLE / THYROID GLAND

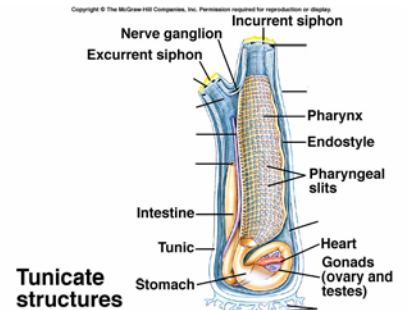
POSTANAL TAIL

---

## MEMBERS

SUBPHYLUM UROCHORDATA (TUNICATES)  
STRUCTURE & FEEDING

MEMBERS

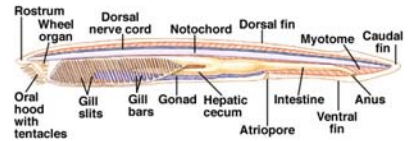


## SUBPHYLUM CEPHALOCHORDATA GENERAL CHARACTERISTICS

### STRUCTURE & FUNCTION

Copyright © The McGraw-Hill Companies, Inc. Permission required for reproduction or display.

#### Amphioxus: a cephalochordate



## SUBPHYLUM VERTEBRATA

# CHORDATE PHYLOGENY & EVOLUTION

Copyright © The McGraw-Hill Companies, Inc. Permission required for reproduction or display.

