

# FISH

---

## GENERAL CHARACTERISTICS

---

## ECOLOGY

---

## STRUCTURE & FUNCTION

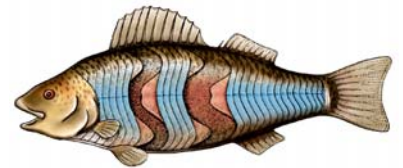
MOVEMENT

BOUYANCY

RESPIRATION

Copyright © The McGraw-Hill Companies, Inc. Permission is required for reproduction or display.

**Fish trunk musculature**



NERVOUS SYSTEM

OSMOTIC REGULATION

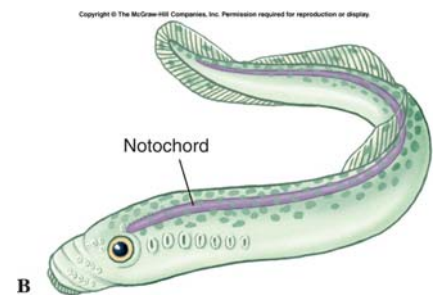
MIGRATION & REPRODUCTION

---

## MEMBERS

AGNATHANS (JAWLESS FISHES)

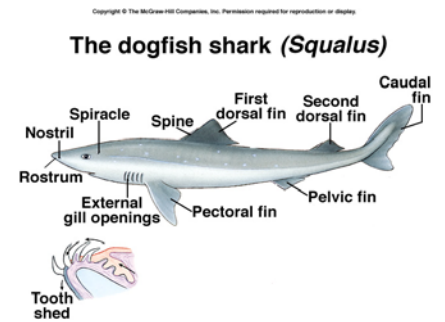
HAGFISH



LAMPREYS

GNATHOSTOMATA (FISHES WITH JAWS)  
CLASS CHONDRICHTYES (**CARTILAGENOUS FISH**)

ELASMOBRANCHS (SHARKS & RAYS)



CHIMAERAS (RATFISH ...)

CLASS OSTEICHTYES (**BONY FISH**)

## RAY-FINNED FISHES

## LOBE-FINNED FISHES

---

# PHYLOGENY OF FISH

