

PHYLUM MOLLUSCA

GENERAL CHARACTERISTICS

MOLLUSC ECOLOGY

STRUCTURE & FUNCTION

GENERAL STRUCTURE
HEAD-FOOT

VISCERAL MASS

MANTLE

MANTLE CAVITY

STRUCTURES IN THE HEAD-FOOT

RADULA

FOOT

STRUCTURES IN THE VISCERAL MASS
MANTLE

MANTLE CAVITY

SHELL

PEARLS

ORGAN SYSTEMS
DIGESTIVE SYSTEM

RESPIRATORY SYSTEM

CIRCULATORY SYSTEM

EXCRETION

NERVOUS SYSTEM

REPRODUCTION

MEMBERS

CLASS POLYPLACOPHERA (CHITONS)

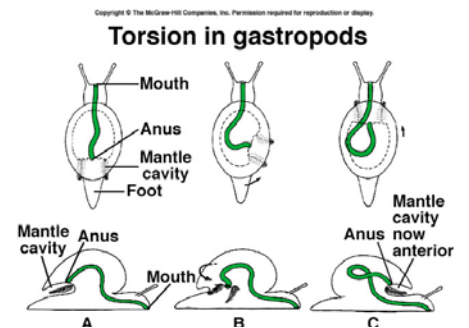
CLASS SCAPHOPODA (TUSK & TOOTH SHELLS)

CLASS GASTROPODA
GENERAL CHARACTERISTICS

TORSION

COILING

ECOLOGY



MARINE GASTROPODS

NUDIBRANCHS

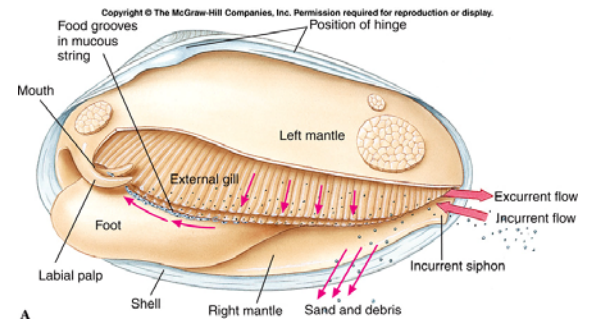
FRESHWATER & TERRESTRIAL MEMBERS

CLASS BIVALVIA
GENERAL CHARACTERISTICS

SHELLS

STRUCTURE

FEEDING



CARDIOVASCULAR & NERVOUS SYSTEMS

MEMBERS

BIVALVES & HUMANS

CLASS CEPHALOPODA
GENERAL CHARACTERISTICS

FEEDING

SHELLS

NERVOUS SYSTEM

INK

MOVEMENT

MEMBERS: *Nautilus*

MEMBERS: SQUIDS & CUTTLEFISH

MEMBERS: OCTOPUS

MOLLUSC PHYLOGENY
