

# PSUEDOCOELOMATE ANIMALS

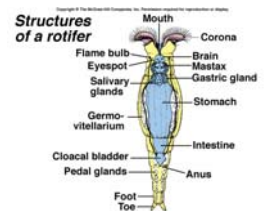
---

## ROTIFERS (PHYLUM ROTIFERA)

GENERAL CHARACTERISTICS

ECOLOGY

STRUCTURE



---

## SPINY-HEADED WORMS (PHYLUM ACANTHOCEPHELA)

GENERAL CHARACTERISTICS

ECOLOGY

STRUCTURE

---

## ENTOPROCTS (PHYLUM ENTOPROCTA)

GENERAL CHARACTERISTICS

ECOLOGY

STRUCTURE

