

# SPONGES (PHYLUM PORIFERA)

---

## GENERAL CHARACTERISTICS

LISTEN TO AN OVERVIEW OF SPONGES AT <http://webhome.broward.edu/~sobenauf/zoo2010/podcasts%20zoo/Sponges.mp3>

---

## SPONGE ECOLOGY

---

## STRUCTURE & FUNCTION

### GENERAL STRUCTURE

#### CANAL TYPES ASCONOID

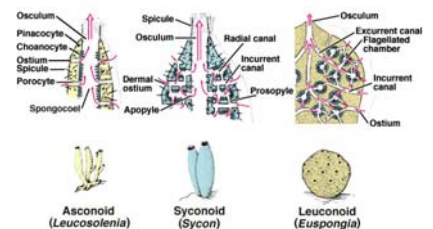
#### SYCONOID

#### LEUCONOID

### SPONGE SHAPES

Copyright © The McGraw-Hill Companies, Inc. Permission required for reproduction or display.

#### Types of sponge structure



CELL TYPES  
CHOANOCYTES

ARCHEOCYTES

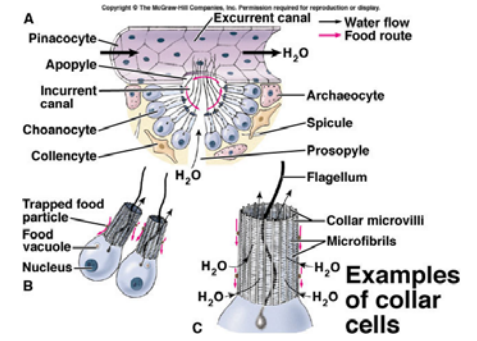
PINACOCYTES

COLLENCYTES

SKELETON  
SPICULES

SPONGIN

REPRODUCTION



---

## SPONGE PHYLOGENY

---